

Preliminary

**Optronis**

Make time visible

CAMRECORD-SPRINTER SERIES

# Sprinter-FHD

High-Speed Video Camera



- RESEARCH
- TROUBLESHOOTING
- SCIENTIFIC

- 1 800fps with 1 920x1 080pixels
- Standalone operation
- SSD backup storage up to 1 TB
- fast 16 GB camera memory
- TimeViewer user software included
- wireless control via tablet PC

[www.optronis.com](http://www.optronis.com)

# Sprinter-FHD High-Speed Video Camera

**Optronis**

Make time visible

## DESCRIPTION

Sprinter-FHD of the CamRecord-Sprinter series is a high resolution, high-speed camera with integrated frame memory. Various trigger and synchronization features makes the camera an ideal tool for research and industrial applications. The camera is controlled by TimeViewer software via GigE interface or WiFi connection.

## SPECIFICATIONS

|                               |                                                                                                                                           |
|-------------------------------|-------------------------------------------------------------------------------------------------------------------------------------------|
| Sensor resolution             | 1920 × 1080                                                                                                                               |
| Frame rate @ max. sensor res. | 20 .. 1800 fps                                                                                                                            |
| Memory                        | 16 GB internal                                                                                                                            |
| Image sensor                  | CMOS, Global Shutter                                                                                                                      |
| Exposure time                 | 2 μs - 1/framerate                                                                                                                        |
| Active area                   | 19.2 mm x 10.8 mm                                                                                                                         |
| Sensor diagonal dimension     | 22.0 mm                                                                                                                                   |
| Pixel size                    | 10.0 μm                                                                                                                                   |
| A/D conversion                | 8 Bit                                                                                                                                     |
| Dynamic                       | 48 dB                                                                                                                                     |
| Sensitivity                   | 20 V/lux × s @ 550 nm                                                                                                                     |
| Trigger modes                 | internal free-run, switch, rising or falling edge, pre- and post-trigger                                                                  |
| Power                         | 12 VDC                                                                                                                                    |
| Weight                        | 1400 g without mount                                                                                                                      |
| Dimensions                    | 150 mm x 92 mm x 92 mm                                                                                                                    |
| Housing                       | lightweight anodised aluminium                                                                                                            |
| SSD harddrive bay             | data storage and backup                                                                                                                   |
| PC software                   | TimeViewer for Windows (support for version 7, 8 and 10) for capture, video playback, export, export, image analysis with object tracking |
| Scope of delivery             | Camera with 256 GB SSD, TimeViewer, Power supply, Docking station, WiFi dongle, GigE-cable and manual                                     |

## PERFORMANCE (EXAMPLES, PRELIM.)

| Resolution ( H x V) | Framerate  | Recording time |
|---------------------|------------|----------------|
| 1920 × 1080         | 1800 fps   | 4.6 s          |
| 1280 × 960          | 2020 fps   | 6.9 s          |
| 1280 × 720          | 2700 fps   | 6.9 s          |
| 640 × 480           | 4050 fps   | 13.8 s         |
| 384 × 288           | 6750 fps   | 23 s           |
| 256 × 128           | 15100 fps  | 35 s           |
| 256 × 8             | 240000 fps | 35 s           |

## INTERFACES

|                             |                                                                       |
|-----------------------------|-----------------------------------------------------------------------|
| Trigger input (TI)          | TTL, 3.3 - 5 V, optically isolated, recording of sequence             |
| Synchronisation input (SI)  | TTL, 3.3 - 5 V, optically isolated, frame synchronization             |
| Synchronisation output (TO) | TTL, 2.0 - 4.0 V, optically isolated, frame synchronous output signal |
| Programmable output (PO)    | TBD                                                                   |
| HDMI                        | video output                                                          |
| USB                         | WiFi dongle                                                           |
| GigE                        | control and download                                                  |

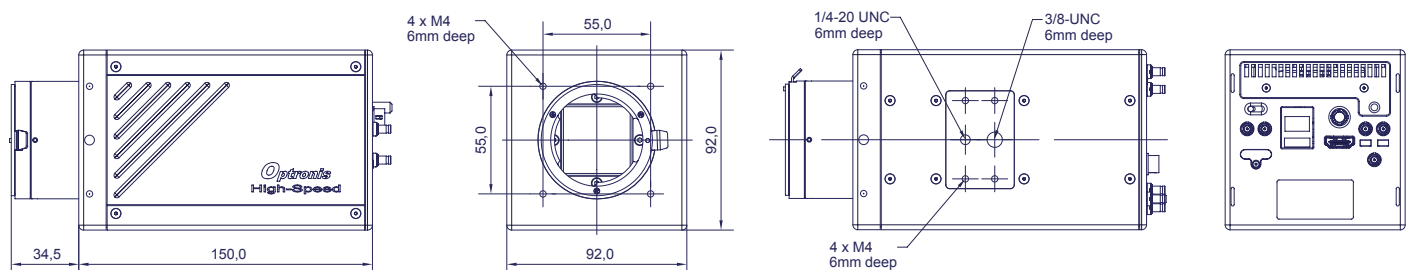
## MODELS

|                |                   |
|----------------|-------------------|
| Sprinter-FHD-M | monochrome Camera |
| Sprinter-FHD-C | color Camera      |

## OPTIONS

|          |                                            |
|----------|--------------------------------------------|
| CR-S-FM  | F-Mount lens adapter                       |
| CR-S-FMG | F-Mount lens adapter with aperture control |
| CR-S-CM  | C-Mount lens adapter                       |

## TECHNICAL DRAWING



## CONTACT INFORMATION

Optronis GmbH  
Ludwigstraße 2  
77694 Kehl  
Germany

Phone: +49 7851 91 26 - 0  
Fax: +49 7851 91 26 - 10  
info@optronis.com  
www.optronis.com

The information given herein is believed to be reliable, however Optronis makes no warranties as to its accuracy or completeness. Data sheet is subject to modifications at any time. 10/2018