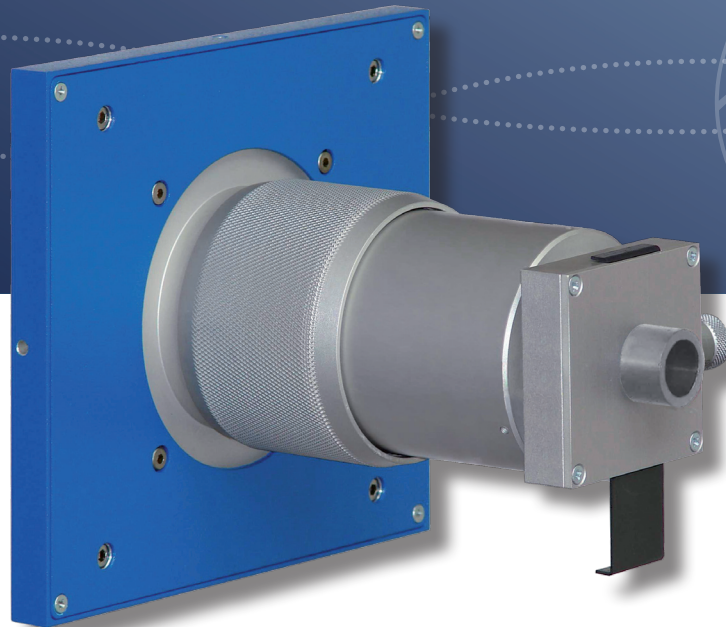


STREAK CAMERA INPUT OPTICS

IOV-10

Visible and NIR range



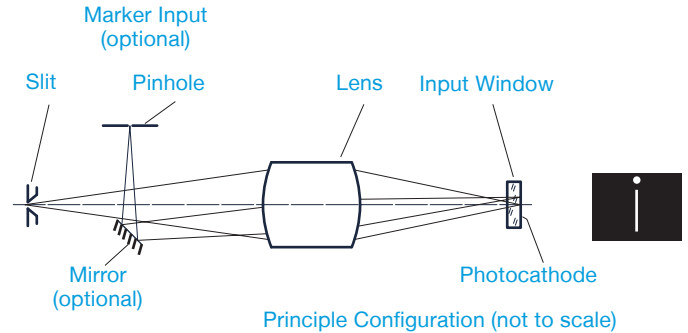
- Adjustable slit width
- Demagnification 2:1 and 1:1
- Wavelength 350 nm .. >950 nm
- To be used with SC-10
- Marker Input (optional)

Input Optics IOV-10

The IOV-10 input optics for OPTOSCOPE SC-10 streak camera allows to focus visible and NIR light on the photocathode of the streak tube. The optics can be mounted easily on the front side of the SC-10 main unit. The input optics includes a mechanical slit and a chromatically corrected coupling lens system. Both mounted in a compact mechanics.

The mechanics provides protection against scattered light and also allows fine focus adjustment. The image of the slit is focused onto the photocathode with a demagnification of 2:1 (IOV-10) or 1:1 (IOV-10/1). The slit width is precisely adjustable to optimize either streak camera temporal resolution or system sensitivity. Alternatively to the adjustable slit, fixed slits or fixed pinholes can be mounted on the same input optics. The position where the slit is focused on to the photocathode can be aligned on the photocathode.

An optional marker input allows to focus a reference signal on the streak tube photocathode typically above the slit. The position on the photocathode can be adjusted by adjustment screws. Either a fiber cable or the direct laser beam are used. This option provides an easy way to generate a signal that can be used as reference for drift and jitter correction.



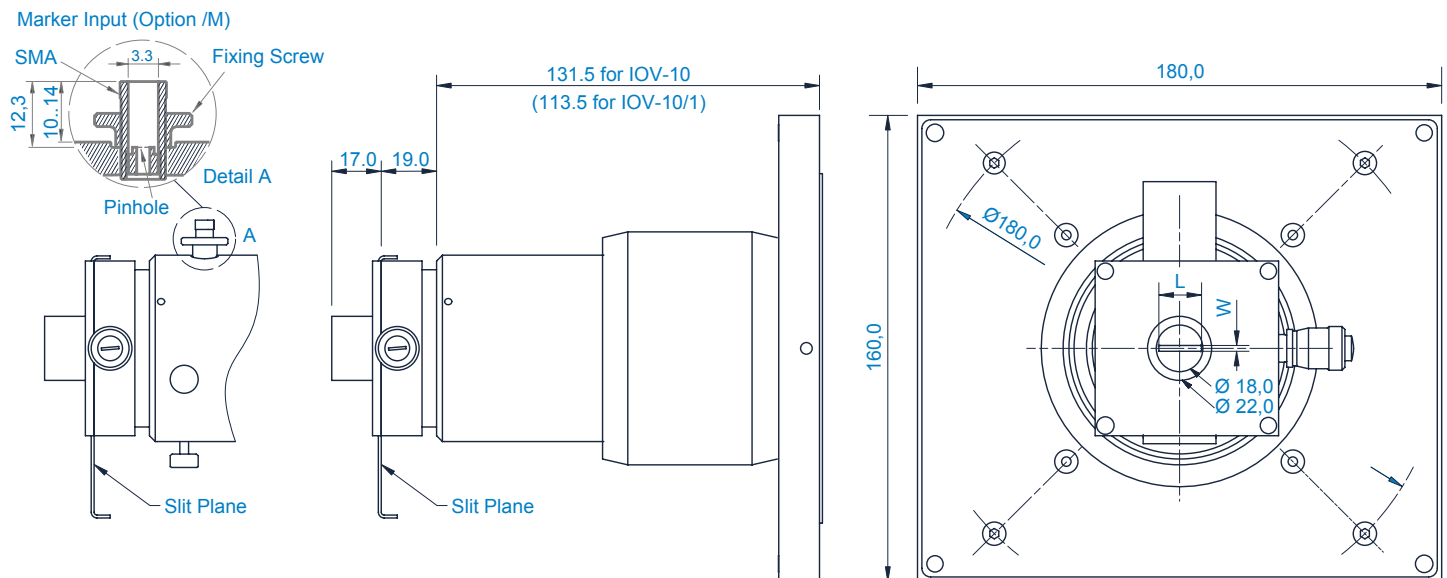
SPECIFICATIONS

Spectral Range	350 nm .. 1100 nm	
Lense Material	Glass (BK7)	
Slit Width	10 µm .. 3.0 mm	
Width Adjustment	Continuous by Micrometer screws	
Slit Length	0 .. 15 mm	
Length Adjustment	Continuous by „Fish-Tail“ Slide	
Focus Adjustment	manual	
	IOV-10	IOV-10/1
Demagnification (typ.)	2:1	1:1
Aperture	F/5	F/4
Dimensions	167.5 mm x 180 mm x 160 mm	149.5 mm x 180 mm x 160 mm
Weight (typ.)	2.25 kg	2.1 kg

MARKER INPUT (OPTION /M)

Marker Aperture	50 µm (others on request)
Marker Port Connector	SMA (others on request)
Image on Photocathode	adjustable on X and Y direction

TECHNICAL DRAWING



CONTACT INFORMATION

Optronis GmbH
Ludwigstraße 2
77694 Kehl
Germany

Phone: +49 7851 91 26 - 0
Fax: +49 7851 91 26 - 10
info@optronis.com
www.optronis.com