

CAMRECORD

Sprinter

CR-S3500



- RESEARCH
 - TROUBLESHOOTING
 - SCIENTIFIC
- 3500 fps with 1280x860 pixels
 - Standalone operation
 - WiFi with Android App for control
 - SSD backup storage
 - fast 16 GB camera memory
 - TimeViewer user software included

PERFORMANCE (EXAMPLES)

Resolution (H x V)	Frames / second	Recording time
1280 x 860	3504 fps	4.1 s
1280 x 720	4168 fps	4.1 s
1280 x 600	4974 fps	4.1 s
1280 x 480	6168 fps	4.1 s
1280 x 240	11862 fps	4.4 s
1280 x 120	22030 fps	4.7s
1280 x 8	110154 fps	14.2 s

MODEL OPTIONS

Article number	Description
CR-S3500-M	monochrome Camera
CR-S3500-C	color Camera
CR-S-CM	C-Mount lens adapter
CR-S-FM	F-Mount lens adapter
CR-S-FMG	F-Mount lens adapter with aperture control
CR-S-16GB	16 GB camera memory

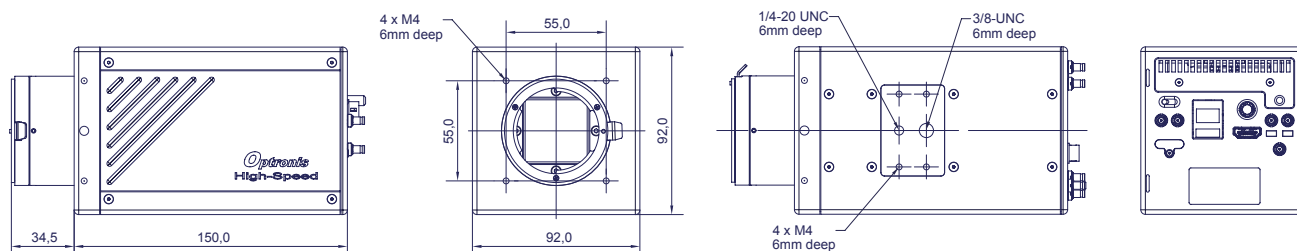
INTERFACES

HDMI	video output
Trigger input (TI)	start recording of sequence (pre- and post trigger)
Synchronisation input (SI)	individual frame acquisition
Synchronisation output (SO)	output signal for each frame
Programmable output (PO)	TBD
USB	WiFi dongle for control via App
GigE	control and download
IRIG-B	TBD

SPECIFICATIONS

Sensor resolution	1280 x 860
Frame rate @ max. sensor res.	3500 fps
Image sensor	Global Shutter CMOS
Exposure time	2 μ s - 1/Framerate
Active area	17.5 mm x 11.8 mm
Sensor diagonal dimension	21.1 mm
Pixel size	13.7 μ m
A/D conversion	8 Bit
Dynamic	48 dB
Sensitivity	25 V/lux*s @525 nm
Shutter efficiency	global electronic shutter
Trigger signal	TTL, 3.3 - 5 V, 10 mA, optically isolated
Trigger modes	internal free-run, switch, rising or falling edge
Interface	Gigabit Ethernet, WiFi (with dongle)
Power	12 VDC
Lens mount	F-Mount, FMG-Mount, C-Mount
Weight	1400 g without mount
Dimensions	150 mm x 92 mm x 85 mm
Housing	lightweight anodised aluminium
SSD harddrive bay	data storage and backup
PC software	TimeViewer for Windows (support for version 7, 8 and 10) for capture, video playback, export and analysis
Tablet software	TimeViewer for Android, available in Google Play Store
Scope of delivery	camera with 256 GB SSD, TimeViewer software, WiFi-dongle, docking station, sync and trigger cables (3x), power supply, GigE-cable and manual

TECHNICAL DRAWING



CONTACT INFORMATION

Optronis GmbH
Ludwigstraße 2
77694 Kehl
Germany

Phone: +49 7851 91 26 - 0
Fax: +49 7851 91 26 - 10
info@optronis.com
www.optronis.com